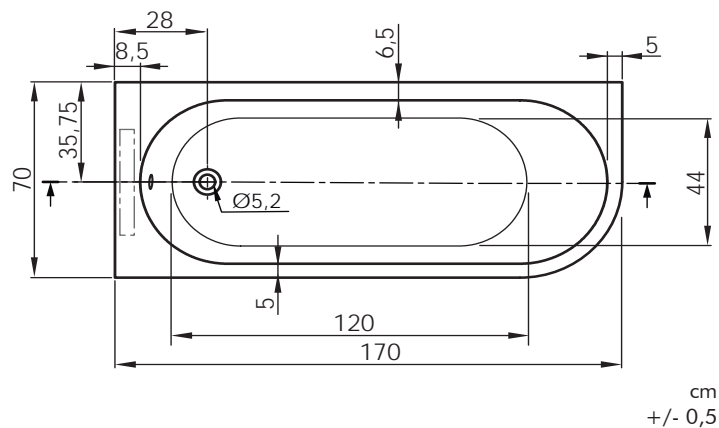
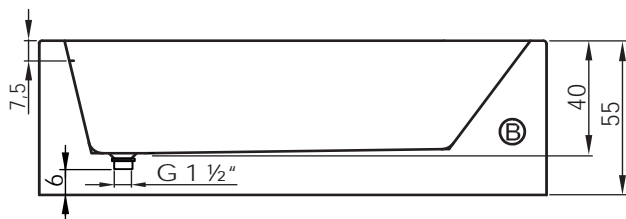
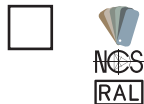


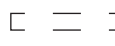



**Material / Material / Matériel / Material / Materiale**  
sanitaryacrylic

**Color / Colour / Couleur / Cor / Colore**



cm  
+/- 0,5



-  Posición habitual de la grifería, disposición 2  
Usual tap position, mounting 2
-  Position commune du robinet, assemblage 2
-  Posição comum das torneiras, arranjo 2
-  Posizione comune dei rubinetti, disposizione 2

### Incluido / Included / Inclus/ Incluído / Incluso



Tubo de descarga flexible, con codo  
Flexible discharge tube, with elbow  
Tube à décharge flexible, avec coude  
Tubo de descarga flexível, com cotovelo  
Tubo di scarico flessibile, con gomito



Desagüe cromado incluido  
Chrome plated drain included  
Bonde chromé inclus  
Dreno cromado incluido  
Scarico cromato incluso

P kg	P' kg	V cmxcmxcm	CA L	S m2	CS kg/m 2
47	55	177 x 77 x 61	182	1,19	192,5

**P:** Peso neto / Net weight / Poids net / Peso líquido / Peso netto

**P':** Peso de expedición / Expedition Weight / Poids d'expédition/ Peso do expedição / Peso spedizione

**V:** Volumen de expedición / Expedition Volume / Volume d'expédition / Volume do expedição / Volume spedizione

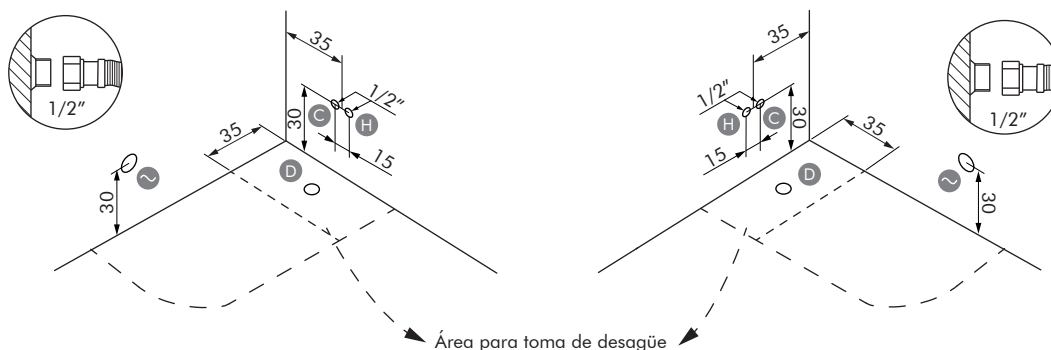
**CA:** Contenido agua / Water content / Contenu d'eau / Conteúdo de água / Contenuto acqua


**S:** Superficie cálculo / Calculation area / Calcul de surface / Cálculo de área / Area de calcolo

**CS:** Carga suelo / Floor load / Charge du sol / Cargo no solo / Carico di piano

**Preinstalación / Preinstallation / Pré-installation / Pré-instalação / Preinstalacion**

A pared / To wall / À mur / A muro / A parete



- D** Desagüe / Waste / Bonde / Drenagem / Scarico
- C** Agua fría / Cold water / Eau froide / Água fria / Acqua fredda
- H** Agua caliente / Hot water / Eau chaude / Água quente / Acqua calda
-  Toma corriente / Power outlet / Prise électrique / Tomada eléctrica / Presa di corrente

**Opcional / Optional / Optionel / Opcional / Opzionale**



BNACC171  
 Cromoterapia (6 leds RGB, pulsador inox)  
 Chromotherapy (6 leds RGB, stainless steel button)  
 Chromothérapie (6 leds RGB, bouton poussoir en inox)  
 Cromoterapia (6 leds RGB, botão de aço inoxidável)  
 Cromoterapia (6 leds RGB, pulsante acciaio inossidabile)



ACRYLMEC  
 Mecanizado para grifería especial, en bañera acrílica  
 Holes for special faucet, in acrylic bathtub  
 Usinage pour robinets spéciaux, baignoire acrylique  
 Usinagem de torneiras especiais, banheira de acrílico  
 Lavorazioni per rubinetti speciali, vasca in acrilico



**sanygrip**

BNACC171  
 Tratamiento antideslizante  
 Anti-slip treatment  
 Traitement antidérapa  
 Tratamento deslizamento  
 Trattamento antiscivolo

COMPONENTES COMPONENTS / COMPOSANTS / COMPONENTES / COMPONENTI	EQUIPAMIENTO EQUIPMENT / ÉQUIPEMENT / EQUIPAMENTO / EQUIPAGGIAMENTO				
	Confort	T Confort	B Confort	DS Confort	Elegance
Motor hidro / Pump / Pompe hydro/ Bomba hidráulica / Pompa					
Jets hidro / Jets hydro / Buses hydro/ Jatos hidro / Getto hidro					
Blower / Blower / Blower / Blower / Blower					●
Jets blower / Jets blower / Buses blower / Jatos blower / Getto blower					8
Focos cromoterapia led / Led cromotherapy focus / Foyers chromothérapie led / Focos cromoterapia led / Foci cromoterapia led					
Pulsador neumático / Pneumatic push / Commande pneumatique / Botão pneumático / Spinta pneumatica					
Regulador de aire / Air regulator / Variateur d'air manuel / Air regulador / Regulatore aria					
Pulsador on-off inox / On-off push inox / Commande on-off inox / Botão on-off inox / Spinta on-off inox					
Boca de aspiración / Suction mouth / Bouche de succion / Boca de aspiração / Bocca di aspirazione					
Panel táctil / Tactile panel / Panneau tactile / Pannel táctil / Pannello tactile					●
Sensor de nivel / Sensor level / Détecteur de niveau / Sensor de nível / Sensore di livello					●
Sistema autovaciado del blower / Self-emptying blower system / Système auto-vidange «blower» / Sistema auto-esvaziamento do blower / Sistema auto-svuotamento di blower					●
Peso kit / Kit weight / Poids kit / Peso kit / Peso kit (kg)					11
U (V)					230
F (Hz)					50
P (KW)					0,400
Nivel acústico / Acoustic level / Niveau sonore / Nivel de som / Livello sonoro (dB)					52

SH



Elegance



Izquierda / Left / Gauche / Esquerda / Sinistra

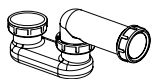
**Accesorios / Accesories / Accesories / Acessórios / Accessori**



BNACC188  
Grifería repisa Kali  
Kali over rim tap  
Robinet sur plage Kali  
Torneira prateleira kali  
Rubinetto mensola kali



BNACC163N  
Reposacabezas CN3  
Headrest CN3  
Repose-tête CN3  
Encoste de cabeça CN3  
Poggiatesta CN3



BNACC194  
Sifón bañeras  
Bathtub siphon  
Siphon pour baignoires  
Sifão banheiras  
Sifone vasca